



Innovative

Robust

Easy To Use

PerspectiveVMS™

Video Management Software
Product Highlights

LENSEC is a security partner with experience in the United States and around the world.

Since 1998, LENSEC has been working in various marketplaces on wide ranging projects to bring the right videocentric solution that solves tough security problems.

LENSEC works alongside customers to provide solutions to keep people assets safe.

SOFTWARE FEATURES

Enterprise Edition

- Enterprise Designed
- Advanced Features
- Unlimited Sites
- Unlimited Users
- Unlimited Cameras
- Workflow Tools
- Active Directory
- Access Control Integration
- Video Analytics Integration

Standard Edition

- Mid-Tier Level Software
- Up to 100 Licenses
- Includes Centralized Management
- Multi-Site Locations
- Neighboring Cams
- Video Tagging
- Collaboration Tools
- Audio/Video Sync
- Budget Sensitive Price

Express Edition

- Scaled Down
- Designed for Small Projects
- Up to 10 Licenses
- Browser-Based
- Easy to Learn
- Easy to Manage
- Mobile Device Apps
- Dynamic Interactive User Interface
- Out of Browser Client



PerspectiveVMS

Map Module Features

Interactive Map Navigation enables users to pan and zoom for the desired display. Dynamic maps include useful display information and features.



MAPS

MAPS

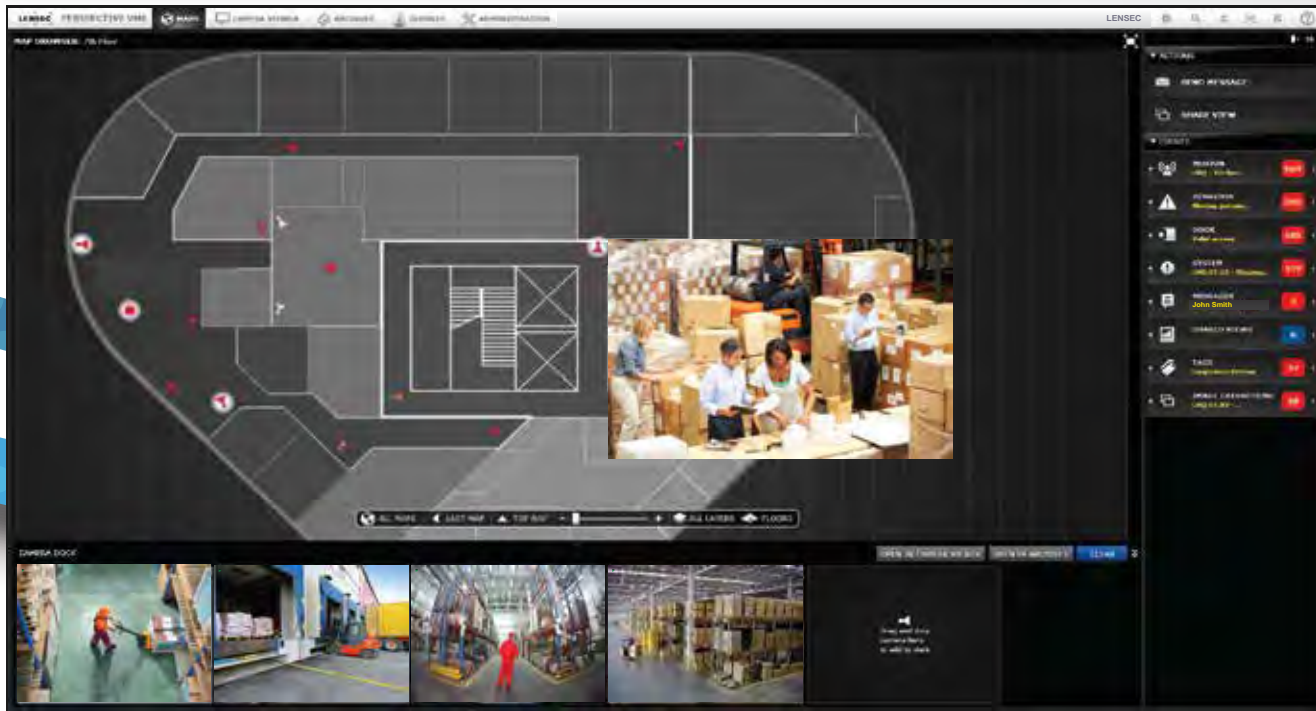
Camera Hover
pops up a live
camera view from
the interactive map

Map Editor
customizes any
image file for your
maps

Camera Dock
gives users a heads
up display of live
video

Global Search
finds any map or
device on the network
for one-click retrieval

Multi-Level Maps
improves navigation
through remote sites
or through floors



Camera Viewer provides live video streaming with customizable display settings featuring multi-view presets, PTZ controls, and live local recording.



CAM VIEW



CAMERA VIEWER

Instant Review
Recorded video may be viewed at the same time as live video

Neighboring Cameras
logically groups cams with neighbors for following recorded or live video action through a location

PTZ Control
gives user virtual joystick control of Pan/ Tilt/Zoom cameras

Multi-View Feature
offers user ability to customize camera sequences that may rotate on a schedule

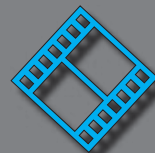
Real Time Video Extraction
provides ability to live record video with one click on any camera view



PerspectiveVMS

Archiving allows users to quickly locate and playback archived video from a timeline based interface.

Archives Module Features



ARCHIVES

ARCHIVING

Dynamic Timeline
allows thumbnail
browsing of multiple
cameras over defined
time ranges

Fast-Find Search
enables video motion
search within a user
defined area

**Full Screen Archive
Monitoring**
allows users to review
archived video in full
screen format

Open Video Format
provides extraction of
video that may be
viewed in standard
media players

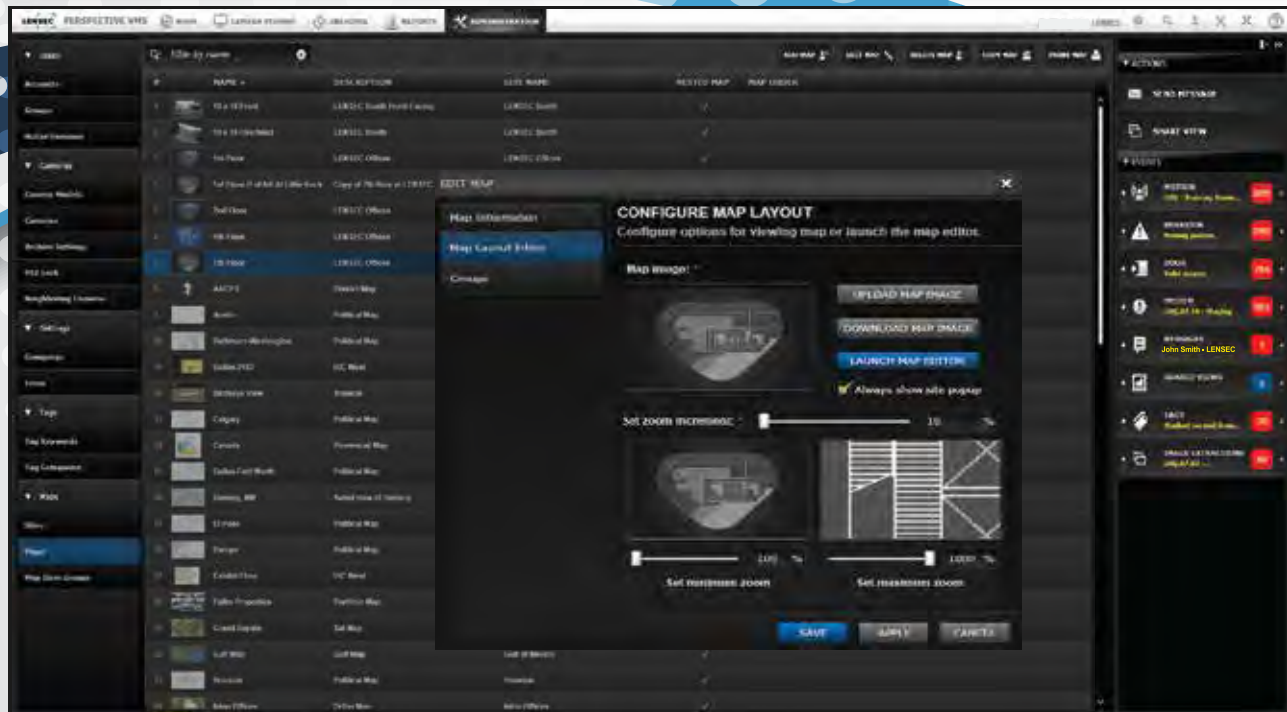
Time-Lapse Video
provides the ability
to record video in
increments spanning
weeks, months or
even years



Administration Tool provides an intuitive and detailed interface for configuration and operational management of users, devices and system parameters.



ADMIN



ADMIN

Audit Trail shows a report of users' actions & history

Health Monitor checks status of defined cameras, notifying users & generating a health report

Active Directory allows integration for import of users/groups & configuring permissions

Archive Locking marks segments of video & exempts them from file deletion

Workflows associate objects, triggers, & actions allowing admin alerts



Perspective VMS

Action Panel Features Tutorial Module Features

Action Panel provides collaboration tools for bookmarking activity and sharing info with other users.

Online Tutorial is accessible from within the VMS.



TRAINING

ACTION PANEL

Alerts Notification
provides notifications
(audible & visible) to
alarms & events

Share View
is a dynamic view
sent to other users for
fast collaboration
with team members

Extraction Tools
include options for
easy searching &
downloading video

Tagging Tools
simplify searching or
adding tags that
mark video, cameras
or events

TUTORIAL

Online Tutorial
quick access to
software tutorials from
within the VMS or on
www.LENSEC.com

LENSEC
The Power of Perspective

- General System Layout
- Maps Module
- Camera Viewer Module
- Archive Browser Module
- Administration Module
- Side Panel and Events Component
- Video Release Notes
- Installation Tutorial - Perspective VMS
- Perspective VMS - Mobile App

General Layout | Login and Welcome Screen

The purpose of this tutorial is to describe the Welcome Module. The Welcome Module hosts navigation to components and modules within Perspective VMS. The tutorial will also go through the basics of logging in to the software platform.

LENSEC

Top Navigation Bar

For Best Playback Quality - Click the "HD" Button on the Video

RIGHT SIDEBAR:

- ACTIVE
- SEND MESSAGE
- SHARE VIEW
- LOCKDOWN
- POWER OF PERSPECTIVE
- EVENTS
- SYSTEM (Perspective VMS) [HD]
- PERMISSION (Perspective VMS) [HD]
- SYSTEM (Perspective VMS) [HD]
- PERMISSION (Perspective VMS) [HD]
- SYSTEM (Perspective VMS) [HD]
- PERMISSION (Perspective VMS) [HD]
- SYSTEM (Perspective VMS) [HD]
- PERMISSION (Perspective VMS) [HD]
- SYSTEM (Perspective VMS) [HD]
- PERMISSION (Perspective VMS) [HD]



The Power of Perspective

LENSEC LLC
Corporate Headquarters
1800 Bering Drive, Suite 751
Houston, TX 77057
Toll Free: 800.348.4234
Email: sales@lensec.com

SECURITY SOLUTIONS:

Commercial
Critical Infrastructure
Government
Higher Education
Healthcare
K-12 Schools
Oil & Gas
Transportation



Perspective
VMS



Identification Systems Group
www.identificationsystemsgroup.com
info@identificationsystemsgroup.com
888 864 6482

