

Accountability Manager

A complete solution that quickly and securely provides positive ID on-site and tracks daily activity of documented personnel and visitors.



Experience Greater Accountability

The Accountability Manager Solution (AMS) identifies and manages the day-to-day activity of people on company property quickly and securely. Identify, authenticate, track and report on all personnel/visitors with a system that meets the requirements of tracking documented workers. Accountability Manager is flexible and can be tailored to meet specific needs based on organization requirements. Organizations experience a higher level of security, increased risk management and greater accountability using the Accountability Manager Solution.

AMS Basics

Accountability Manager software is comprised of two basic components - AMS Client & AMS Server. Both elements provide certain functionality that support different user capabilities. Accountability Manager Systems can be configured to best suit the needs of each organization.



AMS Features

- > Track a person's information, location purpose, and time spent on-site.
- > Quickly capture data from a driver's license or state issued ID to produce IDs for visitors.
- > Improve security, risk management and accountability.
- > Synchronize and share data with many Command Centers.
- > An interoperable system allowing other credentials to be integrated at an event.
- > Accurately track on-site personnel and visitors for audits and reports.
- > Link multiple events together for reporting.
- > Link files to personnel and attach documents.
- > Select from multiple card designs.
- > Track certifications or specialties.
- > Access information remotely through web access.

AMS Server



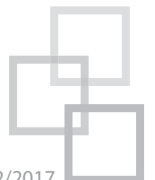
- > Web application accessed via a web browser or locally installed.
- > Maintain a centralized database.
- > Upload photos.
- > Manage asset & personnel data among multiple departments (Create, edit, or archive records).
- > Control access settings for each user.

AMS Client



- > Software installed locally on PC.
- > Capture photos.
- > Connect to USB peripherals (Scanners, ID printers, cameras, etc.).
- > Print ID cards centrally or locally.

Each component can be used as a stand-alone solution or can be combined in a number of possible configurations. Accountability Manager is designed to provide users the ability to manage event data and monitor event status using a locally installed system or from any location using an internet browser. This provides a cost efficient umbrella solution by managing multiple locations using one solution that supports one centralized database.



Companion Products

The Accountability Manager software can be integrated with other hardware and software products to enhance the solution and build a more comprehensive system resulting in greater effectiveness and success.



Mobile Command Cases

The Mobile Command Case is a turn-key, integrated solution packaged as a compact, self-contained workstation. This case is designed to quickly be transported and setup with little to no preparation.

- Available as a standard or mini command case.
- A mobile, compact design makes it easy to transport and store each case for quick access.
- Protected by a durable, water tight mobile case.
- Track people away from the command workstation.



Easily transport to multiple locations with little to no preparation!



Mobile Solutions App

- Track personnel away from the command workstation.
- Create an event & enroll people on-site before the command workstation is setup.
- Manage multiple entry and exit points at a site.
- Multiple devices work from one centralized database.
- Supports many formats including 1&2D barcodes, QR tags, etc.



Stationary Tracking Devices

- Quickly capture data from a driver's license or state issued ID.
- Scan an ID to log in a person to an event.
- Capture data stored on a 1- or 2-D barcode, RFID or magstripe ID.
- Scan personnel in and out on-site without immediate supervision.



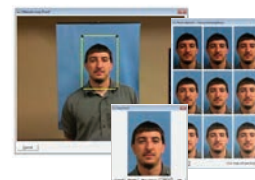
Asset Manager Solution

- Tracks products by grant, department & purchase date.
- Track information on items that require maintenance.
- Generate asset reports for accountability of state and federal grant purchases.
- Associate assets using a parent/child category relationship.
- Use a handheld device for quick & easy inventory tracking.
- Assign assets to people.



ID Badging System

- Multiple security features to choose from.
- Increased durability with virtual edge-to-edge laminates.
- Instantly issue quality IDs.
- Include color photos, logos & background images on IDs.
- Theft-detrant software and hardware lock system.



IDPix 1000 Professional

- One click photo capture & auto cropping.
- Quickly capture high quality photos.
- Cable management.
- Ability to integrate with multiple cameras & software.
- Reliable, consistent performance.
- Streamlined design & function controls.

Optional Accessories

- SmartReg
- Tethered scanner
- Stationary reader
- Handheld devices
- Label printer
- Asset tag printer (Asset Manager)
- Wristbands
- Capture solutions
- Webcam

Minimum Requirements

- CPU CORE 2DUO 2.0 GHZ w/AMB Cache
- Windows 64 BIT or Windows 7 Pro 32 bit
- 10/100 Network Card
- SQL 2008 R2 Express
- 2 GB Ram
- Minimum Browser IE9
- 20 GB free hard drive space
- Adobe Reader (free version)
- 4 USB 2.0 Ports
- Clean power



Identification Systems Group

Phone: +1 888 864 6482

www.identificationsystemsgroup.com

info@identificationsystemsgroup.com